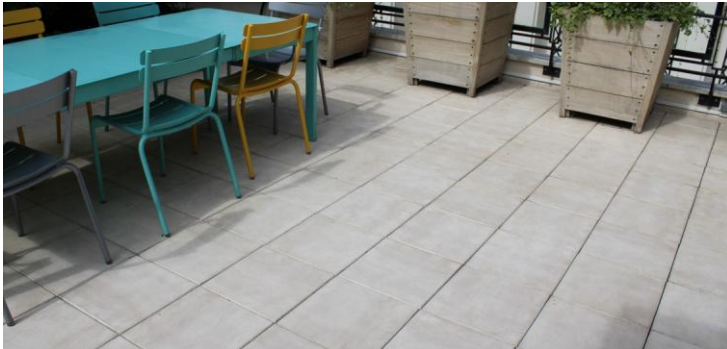




PROTECTGUARD®



BIOSOURCED WATER & OIL-REPELLENT, ANTI-STAINING PROTECTION OF POROUS AND LOW POROUS FLOOR

- PROTECTS AGAINST WATER, STAINING AND OIL
- REDUCES SLIPPERINESS
- ÉCONOMICAL: 1L = 10 M²

- BIOSOURCED FORMULA WITH 51% PLANT ORIGIN INGREDIENTS
- INTERIOR AND EXTERIOR
- CLEAR AND BREATHABLE
- UV AND FROST-RESISTANT

DESCRIPTION

ProtectGuard® Plant-Based Formula is a new generation product for the water-repellent, oil-repellent and anti-stain protection of all porous and low-porous building materials.

ProtectGuard® Plant-Based Formula is a bio-based product derived from biomass. It has been formulated with ingredients of plant origin (corn, beetroot, tree resin). The use of plant molecules represents an eco-responsible alternative to fossil resources that are harmful to the environment.

ProtectGuard® Plant-Based Formula durably protects all materials and helps prevent the main causes of degradation such as stains, atmospheric pollution, greasy soiling, infiltration... It delays the aging of the support and facilitates its maintenance.

ProtectGuard® Plant-Based Formula lets the material breathe. The support thus remains permeable to air and water vapor. Colourless after application, it does not modify the nature of the treated support. In addition, it is perfectly UV resistant and does not discolour with age.

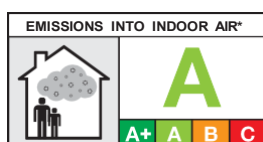
USE

ProtectGuard® may be used indoors or outside on walls, floors. It is designed to protect all porous and low porous building materials such as natural and synthetic stone, concrete, terracotta, cement, self-locking paving, granite marble...

On very low porous or polished materials, use ProtectGuard® MG.

ADVANTAGES AND CHARACTERISTICS

- Effective for more than 10 years. Make cleaning easier.
- Protects against water and oily liquids.
- Anti-staining, anti-dirt.
- Prevents dirt due to pollution from building up again. Limits moss, lichen growth and deterioration resulting from freeze-thaw cycle.
- UV-resistant, does not discolour and lets the surface breathe. Ready to use, easy to use.



ENVIRONMENT

Environment-friendly product:

- Raw materials from 51% renewable resources of plant origin.
- 97% biodegradable*.
- Non-hazardous, water-based product and petroleum solvent free.
- VOC < 1 g/l*.

CHEMICAL NATURE

Aqueous phase emulsion composed of 51% bio-based resin of plant origin.

CONTAINERS

Check www.guardindustry.com.au for pack sizes.

TECHNICAL DATA

Physical state at 20 °C	: Liquid
Appearance	: White
Odour	: None
pH	: 7.5 ± 0.5
Boiling point [°C]	: 100 °C
Density	: 1.03 ± 0.01
Solubility in water [vol/vol]	: Total
Flash point [°C]	: Not applicable

HOW TO USE

Surface preparation :

- Apply the product to a surface that is clean, dust-free, grease-free and dry. To remove stains and marks of pollution use **Guard Wash®**. In case of greasy stains use **Guard Cleaner®**. For efflorescence, laitance or concrete bloom use **Guard Remover®**.
- Rinse thoroughly until the surface is completely free from any cleaner marks and let dry 24 to 48 hours.

Application:

- Use neat, do not dilute.
- Shake the packaging well for 5 minutes before use.
- Always carry out a full preliminary test under actual conditions of use on a small surface to check effectiveness and compatibility with the substrate. The final visual result is obtained after 24 hours of drying.
- Apply in one uniform coat. On very porous materials, apply the product in two coats with an interval of 15 minutes.
- **Do not spray the product.**
- Do not overload the support, apply a thin layer, taking care to pull the product well.
- **NOTE:** in some cases, the product may leave white marks on the surface after application. This phenomenon is normal and the traces disappear after complete drying.
- Drying time: 24 hours.
- Optimum effectiveness obtained after 7 days.

APPLICATION TOOLS

Apply preferably with a roller:

- Smooth surface = 4 to 6 mm nap.
- Textured surface = 6 to 8 mm nap.

Can also be applied with a wide brush.



MAINTENANCE

Stubborn dirt should be cleaned off with clean water or with a pH neutral cleaner.

COVERAGE

Coverage depends on the porosity of the material. The figures below should be used only as a general guideline:

- **Porous materials: 5 to 7 m² / litre.**
- **Low porous materials: 8 to 10 m² / litre.**

PRECAUTIONS FOR USE

- Remove all atmospheric pollution-related dirt from all surfaces to be treated before starting the treatment.
- The product may slightly accentuate the colour on certain materials (satin effect). Always carry out a test on the substrate to be treated before application.
- Do not apply on very low porous or polished (use **ProtectGuard® MG**), organic, metallic or waterproof materials.
- For a perfect application and effective protection, **ProtectGuard® Plant-Based Formula** must be used on a support having a temperature between 10°C and 30°C, a humidity level less than or equal to 5% and a pH between 7 and 10.
- Do not apply in rainy weather, very hot weather or in full wind. Air temperature between 10°C and 30°C. Hygrometry rate: between 30% and 80% RH (relative humidity).
- Check for the absence of precipitation within 24 hours of the work.
- Do not dilute or mix with any other product.
- We recommend maintaining regularly the surface to keep its new look.
- **ProtectGuard®** does not prevent from tire marks on floors. To remove these marks, use **Guard Cleaner®**.
- Some stains (eg. stains from leaves) seem harder to remove. In this case, just apply some **Guard Wash®**, let it act and then rinse with water. It will not remove the protection product.
- Environmental protection and packaging: dispose of empty packaging at a waste disposal centre. Never dispose of packaging in the environment.

CLEANING YOUR EQUIPMENT

Clean tools and equipment with water.

STORAGE

- Keep in a dry place (between 5°C and 30°C).
- Storage: 24 months following the production date when kept in the original unopened container.

HEALTH AND SAFETY

For intensive use, refer to paragraph 8.2 of the safety data sheet.

- Respiratory protection: Under normal conditions of use where adequate ventilation is available, no special respiratory protection equipment is needed.
- Hand protection: Wear latex gloves.
- Skin protection: No special protective clothing or skin protection is required under normal conditions of use.
- Eye protection: If there is a real risk of splashing, wear protective goggles.
- If swallowed: Do not induce vomiting. Contact a doctor or a specialist.

KEEP OUT OF REACH OF CHILDREN

TECHNICAL SUPPORT

GUARD INDUSTRY AUSTRALIA

9 Byron Road, Armadale WA 6112

Phone: 1300 249 767

E-mail: enquiries@guardindustry.com.au

www.guardindustry.com.au

Important: The content of this documentation is based on our experience with the product. Guard Industry guarantees the quality of its products but expressly disclaims all liability if the user does not follow the recommendations and conditions of use of the products, especially but not exclusively in the case of faulty application, application by untrained personnel, use of products not compatible with Guard Industry products, or adverse weather conditions. For more information, consult the safety data sheet.

For the most recent version of our data sheet, visit our website

www.guardindustry.com.au

Last updated: 20/04/2026